

S I N G L E F A M I L Y H O M E S



RESIDENCE

C

5 BEDROOMS
5 BATHROOMS

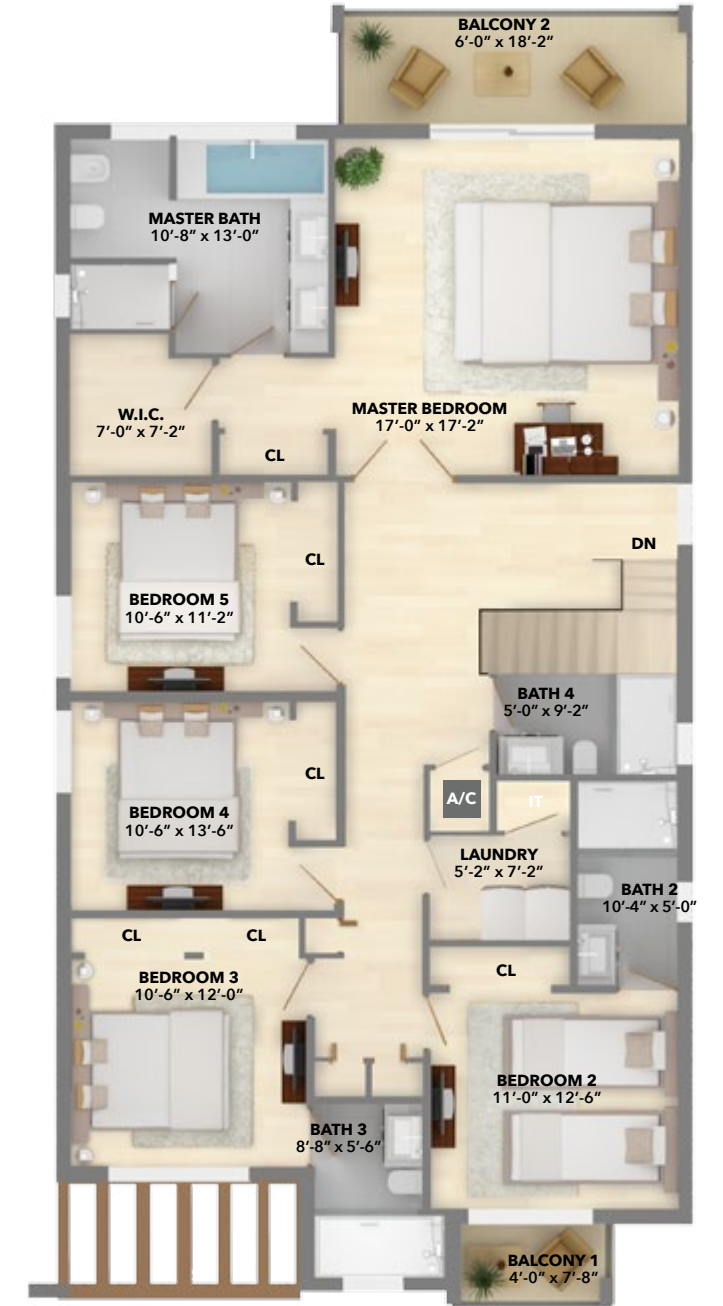


A/C FIRST FLOOR	1,247 SQ.FT.	(115.85 SQ.M.)
NON A/C FIRST FLOOR	581 SQ.FT.	(53.98 SQ.M.)
TOTAL FIRST FLOOR	1,828 SQ.FT.	(169.83 SQ.M.)
A/C SECOND FLOOR	1,771 SQ.FT.	(164.53 SQ.M.)
NON A/C SECOND FLOOR	141 SQ.FT.	(13.10 SQ.M.)
TOTAL SECOND FLOOR	1,912 SQ.FT.	(177.63 SQ.M.)
TOTAL A/C	3,018 SQ.FT.	(280.38 SQ.M.)
GARAGE	385 SQ.FT.	(35.77 SQ.M.)
TERRACE	127 SQ.FT.	(11.80 SQ.M.)
BALCONIES	141 SQ.FT.	(13.10 SQ.M.)
ENTRY	69 SQ.FT.	(6.41 SQ.M.)
TOTAL	3,740 SQ.FT.	(347.46 SQ.M.)

LEVEL 1



LEVEL 2



All dimensions are approximate and all floor plans are subject to change by developer without notice. All plans and renderings are artist conceptual.