
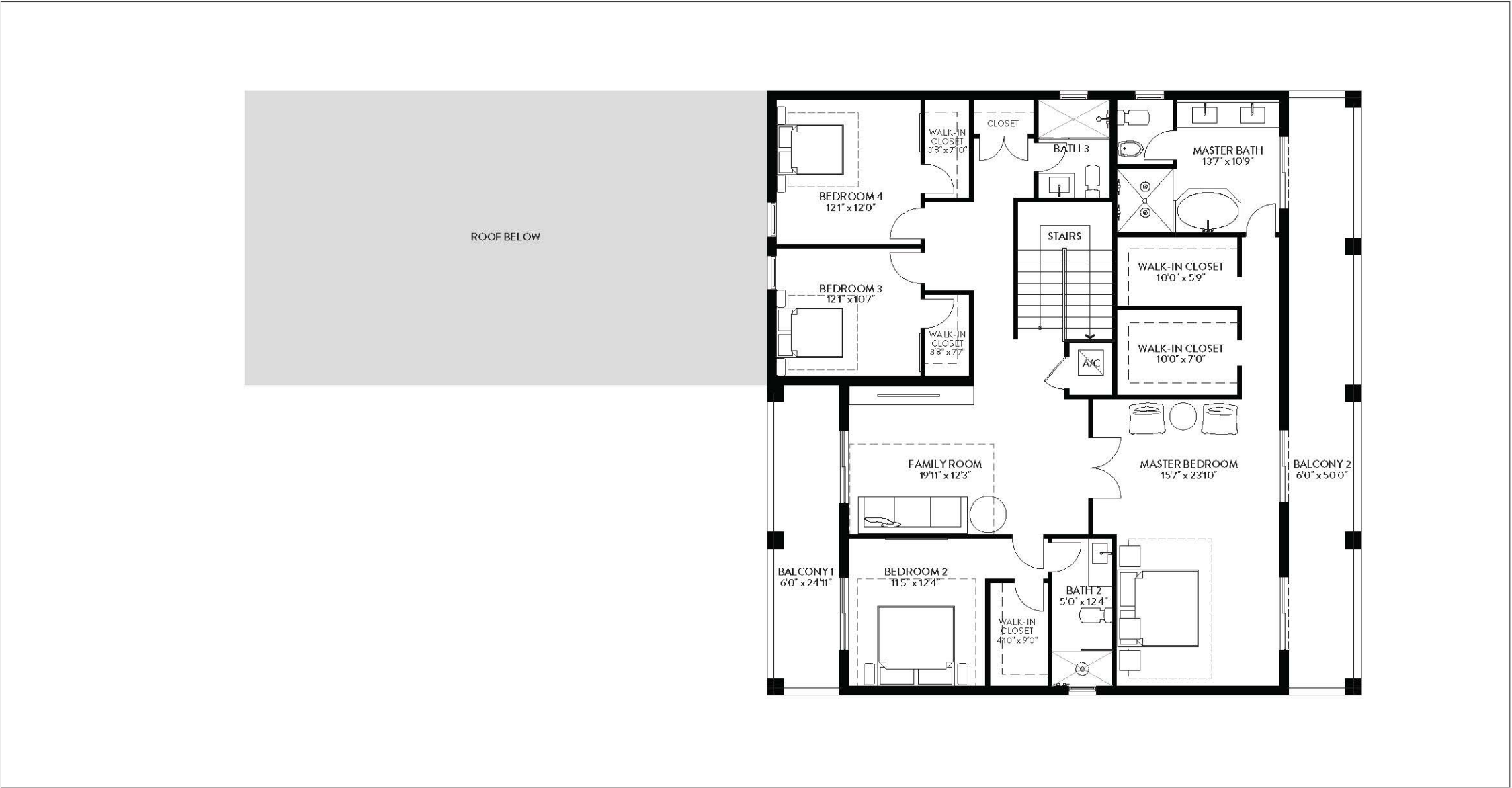


O6 | FIRST FLOOR
4 BEDROOMS / 5.5 BATHS /
MEDIA ROOM / STAFF QUARTERS

FIRST FLOOR	SQ. FT.	SQ. M.	SECOND FLOOR	SQ. FT.	SQ. M.	TOTAL	SQ. FT.	SQ. M.
INTERIOR	2,048	190	INTERIOR	2,004	186	INTERIOR	4,052	376
EXTERIOR	1,462	136	EXTERIOR	454	42	EXTERIOR	1,916	178
TOTAL FIRST FLOOR	3,510	326	TOTAL SECOND FLOOR	2,458	228	TOTAL	5,968	554

 Stated dimensions are measured to the exterior boundaries of the exterior walls and the centerline of interior demising walls and in fact vary from the dimensions that would be determined by using the description and definition of the "Unit" set forth in the Declaration (which generally only includes the interior airspace between the perimeter walls and excludes interior structural components). Note that measurements of rooms set forth on this floor plan are generally taken at the greatest points of each given room (as if the room were a perfect rectangle), without regard for any cutouts. Accordingly, the area of the actual room will typically be smaller than the product obtained by multiplying the stated length times width. All dimensions are approximate and may vary with actual construction, and all floor plans and development plans are subject to change.




O6 | SECOND FLOOR
4 BEDROOMS / 5.5 BATHS /
MEDIA ROOM / STAFF QUARTERS

FIRST FLOOR	SQ. FT.	SQ. M.
INTERIOR	2,048	190
EXTERIOR	1,462	136
TOTAL FIRST FLOOR	3,510	326

SECOND FLOOR	SQ. FT.	SQ. M.
INTERIOR	2,004	186
EXTERIOR	454	42
TOTAL SECOND FLOOR	2,458	228

TOTAL	SQ. FT.	SQ. M.
INTERIOR	4,052	376
EXTERIOR	1,916	178
TOTAL	5,968	554

 Stated dimensions are measured to the exterior boundaries of the exterior walls and the centerline of interior demising walls and in fact vary from the dimensions that would be determined by using the description and definition of the "Unit" set forth in the Declaration (which generally only includes the interior airspace between the perimeter walls and excludes interior structural components). Note that measurements of rooms set forth on this floor plan are generally taken at the greatest points of each given room (as if the room were a perfect rectangle), without regard for any cutouts. Accordingly, the area of the actual room will typically be smaller than the product obtained by multiplying the stated length times width. All dimensions are approximate and may vary with actual construction, and all floor plans and development plans are subject to change.