



New Single-Family Homes from the high \$200s*



*Home and community information, including pricing, included features, terms, availability and amenities are subject to change or prior sale at any time without notice or obligation. Pictures, photographs, features, colors and sizes are approximate for illustration purposes only and will vary from the homes as built. 11/15

Included FEATURES

STRUCTURAL

- Reinforced 2500 psi concrete monolithic foundation slab
- Concrete block exterior walls on first and second floors
- Professionally engineered roof and floor trusses with hurricane clips and bracing
- Durable metal garage door
- Hurricane storm panels
- Embossed insulated 8' front door

PLUMBING

- Elongated commodes throughout
- Pedestal sink in powder room (per plan)
- Moen® bathroom faucets throughout
- CPVC plumbing water lines
- 50 gallon insulated water heater
- Ice maker line with shut-off valve
- Exterior hose bib connections in front and rear for convenience
- Washer/Dryer hookup

ELECTRICAL

- Square D® surge protection on all major appliances
- Pre-wired for ceiling fans with switches in all bedrooms and family room
- High speed structured wiring for 4-line phone, video and computer
Includes CAT-5 data lines in master bedroom and kitchen and RG-6 quad shield coaxial cable in all the bedrooms and family room or great room
- Electrical smoke detectors with battery back-up
- Carbon monoxide detector
- Two-car garage with automatic door opener
- Exterior weather proof outlets (G.F.I.) in front and rear
- Decora switches and outlets throughout
- Minimum 200-amp electrical panel with circuit breakers
- Copper wiring in the interior of the home

MECHANICAL

- Carrier® 14.5 SEER central A/C and heating system with programmable digital thermostat

ENERGY-SAVING FEATURES

- R-30 blown insulation above all air-conditioned living space
- R-11 BATT insulation between interior wall and garage wall
- R-4.1 insulated exterior masonry walls

INTERIOR FINISHES

- Knockdown textured finish on walls and ceilings (bathrooms excluded)
- 2-panel Cheyenne interior doors
- Colonial style baseboards throughout
- Satin nickel interior door levers throughout
- Satin nickel keyed entry handle set
- Vinyl-coated ventilated shelving in all closets
- 18" x 18" Ceramic tile flooring in Foyer, Kitchen, and Laundry
- Luxurious wall-to-wall carpeting in a variety of designer colors (installed over dense padding)

EXTERIOR FINISHES

- Two architecturally designed exterior elevations available with each floor plan
- Choice of exterior color schemes
- White aluminum framed windows
- Decorative exterior coach lights on garage
- Automatic irrigation system
- Fully sodded homesites with professionally designed landscaping
- Paver driveways, entry walkways, and patios
- Gutters in front area of driveway and entry walkway
- Baked in color through cement "S" type roof tiles

KITCHEN & BATH

- GE® Appliance Package:
Glass top range with self cleaning oven and microwave
22 cu ft. side by side refrigerator with ice maker
Five-cycle dishwasher
- Quality crafted custom designed flat paneled wood cabinets with 36" uppers and concealed hinges in the kitchen
- Granite countertop with built up edge
- Double compartment undermount stainless steel kitchen sink with Moen® single lever faucet
- Deluxe 1/3 hp in-sink garbage disposal
- Choice of 12" x 12" ceramic tile floors and bath shower walls
- All baths with adult height custom designed cabinets
- Cultured marble vanity counters
- Full vanity mirrors in all baths

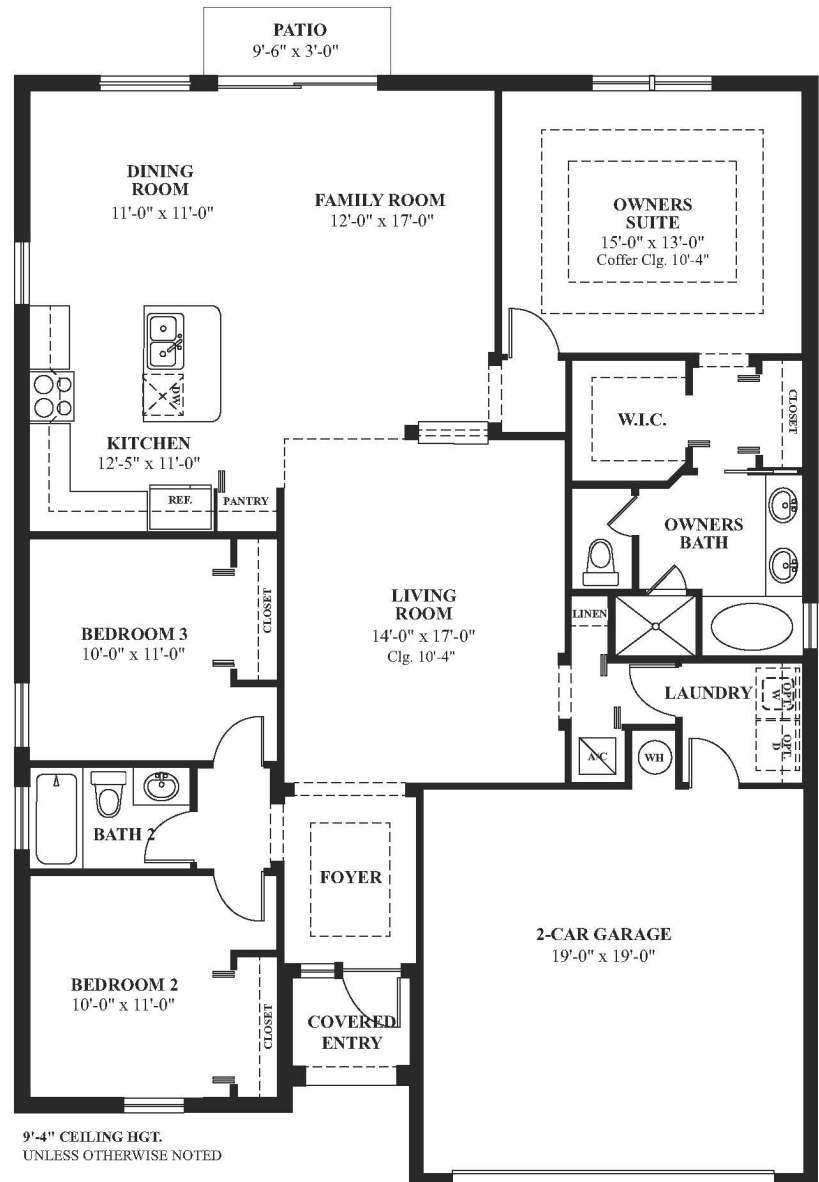
QUALITY ASSURANCE

- Closing cost incentives (when using preferred lender for financing & DHI Title)*
- Personalized New Homeowner Orientation
- D.R. Horton 1-Year Warranty
- 10-Year RWC™ warranty to protect your investment
- 10-Year Carrier® limited warranty



*Not all buyers will qualify. Not redeemable for cash. All terms and conditions subject to credit approval, market changes and availability. Buyers are not required to finance through preferred lender as a condition of purchase or access to settlement services. Included features subject to change without prior notice or obligation, as a result, please consult with one of our sales representatives for the latest community information. Home and community information, including pricing, included features, terms, availability and amenities are subject to change or prior sale at any time without notice or obligation.

3 Bedrooms, 2 Baths, 2-Car Garage



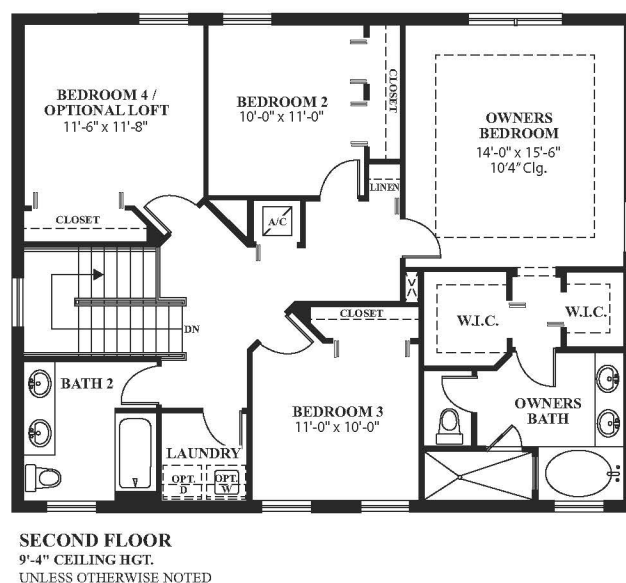
9'-4" CEILING HGT.
UNLESS OTHERWISE NOTED

Total A/C Sq. Ft. 1,636
 Covered Entry 30
 2-Car Garage 460
Total Sq. Ft. 2,126



Pictures, photographs, features, colors, drawings, floor plans, square footages and sizes are approximate for illustration purposes only and will vary from the homes as built. All drawings are the artist's concept.

4 Bedrooms, 2½ Baths, 2-Car Garage

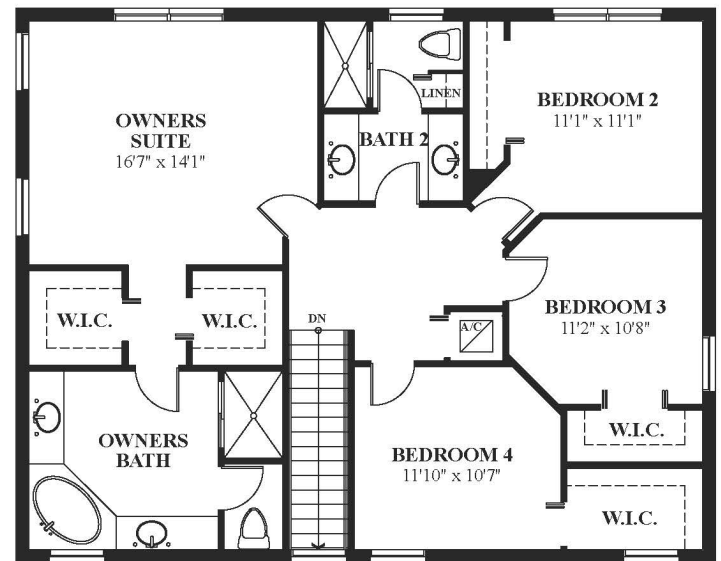
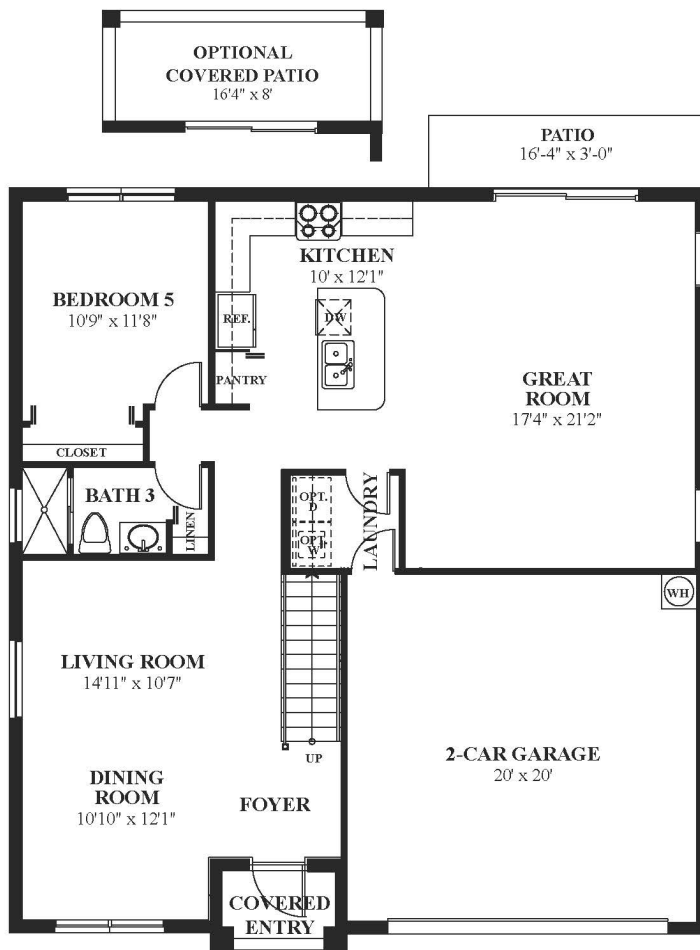


First Floor A/C Sq. Ft. 1,082
Second Floor A/C Sq. Ft. 1,215
Total A/C Sq. Ft. 2,297
Covered Entry 60
2-Car Garage..... 410
Total Sq. Ft..... 2,767



Pictures, photographs, features, colors, drawings, floor plans, square footages and sizes are approximate for illustration purposes only and will vary from the homes as built. All drawings are the artist's concept.

5 Bedrooms, 3 Baths, 2-Car Garage

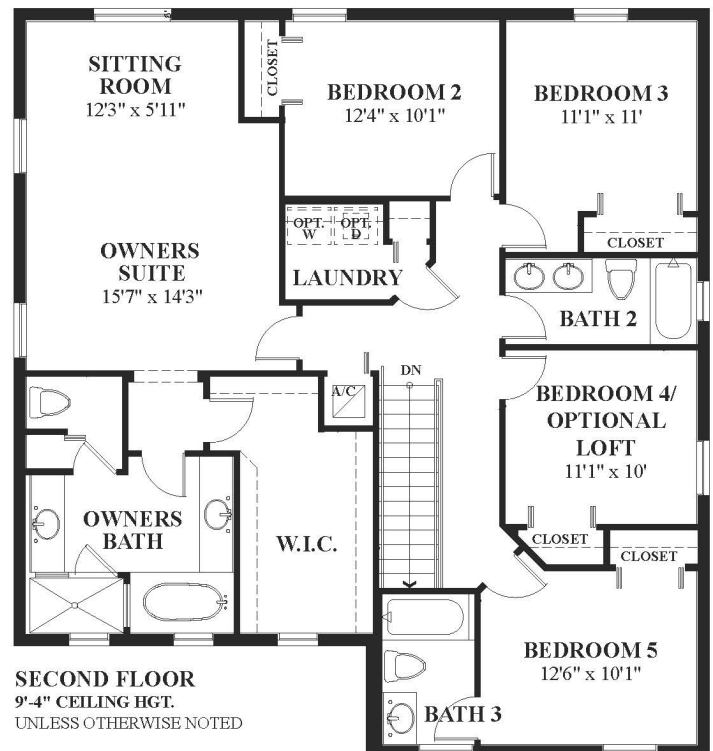
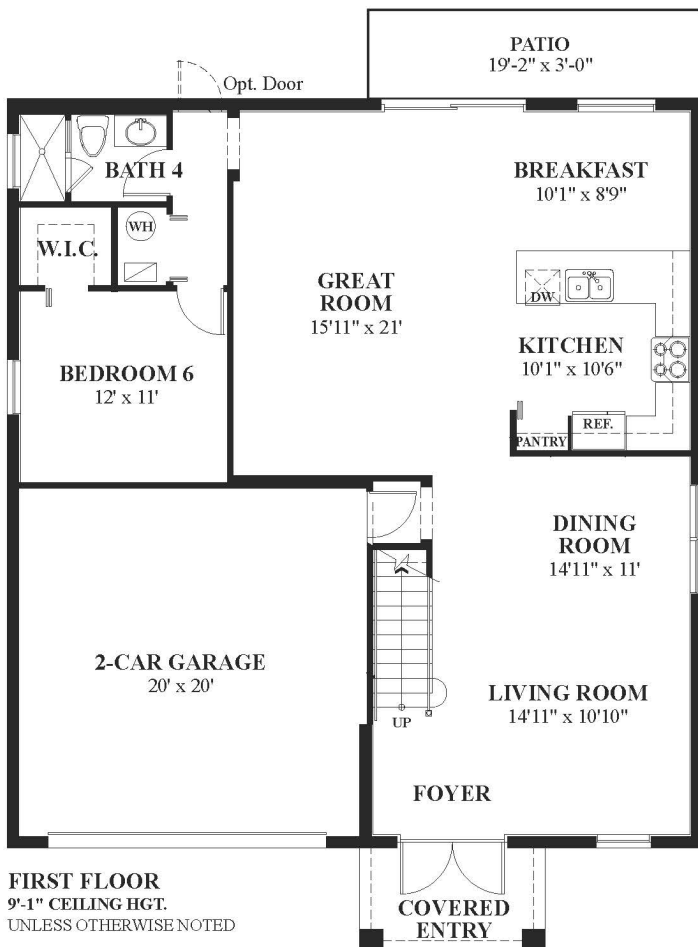
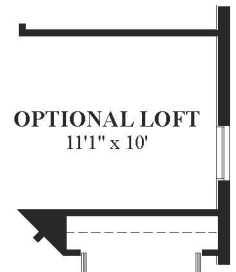
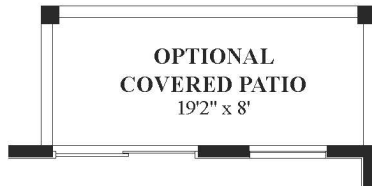


First Floor A/C Sq. Ft. 1,260
Second Floor A/C Sq. Ft. 1,274
Total A/C Sq. Ft. 2,534
Covered Entry..... 31
2-Car Garage..... 430
Total Sq. Ft. 2,995



Pictures, photographs, features, colors, drawings, floor plans, square footages and sizes are approximate for illustration purposes only and will vary from the homes as built. All drawings are the artist's concept.

6 Bedrooms, 4 Baths, 2-Car Garage



First Floor A/C Sq. Ft.	1,299
Second Floor A/C Sq. Ft.	1,593
Total A/C Sq. Ft.	2,892
Covered Entry.....	64
2-Car Garage.....	424
Total Sq. Ft.....	3,380



Pictures, photographs, features, colors, drawings, floor plans, square footages and sizes are approximate for illustration purposes only and will vary from the homes as built. All drawings are the artist's concept.

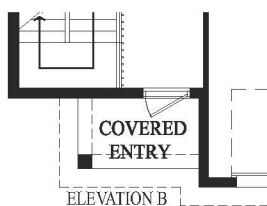
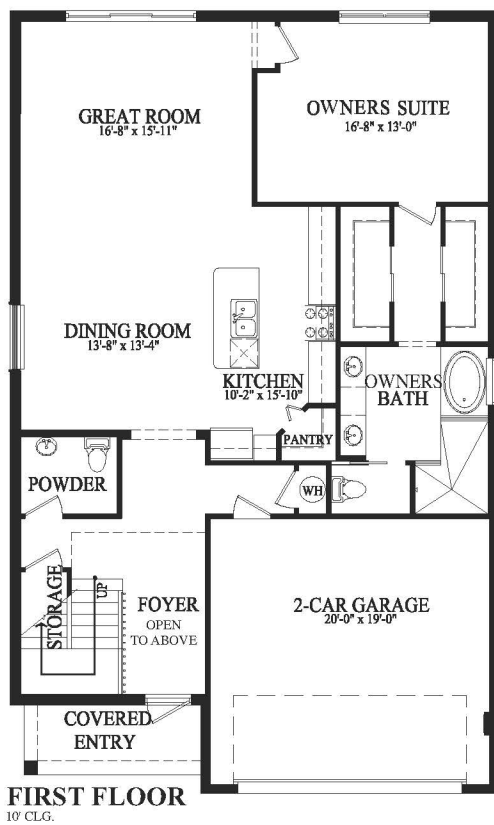
5 Bedrooms, 3½ Baths, Loft, 2-Car Garage



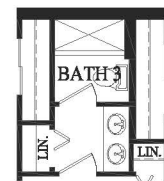
A



B



**BATH 2
SHOWER OPTION**



**BATH 3
SHOWER OPTION**

First Floor A/C Sq. Ft. 1,462
Second Floor A/C Sq. Ft. 1,588
Total A/C Sq. Ft. 3,050
Covered Entry 63
2-Car Garage 412
Total Sq. Ft. 3,526



Pictures, photographs, features, colors, drawings, floor plans, square footages and sizes are approximate for illustration purposes only and will vary from the homes as built. All drawings are the artist's concept.

