

**NO HOA
AND
NO CDD**



New Single-Family Homes from the high \$200s*



*Home and community information, including pricing, included features, terms, availability and amenities are subject to change or prior sale at any time without notice or obligation. Pictures, photographs, features, colors and sizes are approximate for illustration purposes only and will vary from the homes as built. 3/16

Included FEATURES

STRUCTURAL

- Reinforced 2500 psi concrete monolithic foundation slab
- Concrete block exterior walls on first and second floors
- Professionally engineered roof and floor trusses with hurricane clips and bracing
- Durable metal garage door
- Hurricane storm panels
- Embossed insulated 8' front door

PLUMBING

- Elongated commodes throughout
- Pedestal sink in powder room (per plan)
- Moen® bathroom faucets throughout
- CPVC plumbing water lines
- 50 gallon insulated water heater
- Icemaker line with shut-off valve
- Exterior hose bib connections in front and rear for convenience
- Washer/Dryer hookup

ELECTRICAL

- Square D® surge protection on all major appliances
- Pre-wired for ceiling fans with switches in all bedrooms and family room
- High speed structured wiring for 4-line phone, video and computer
Includes CAT-5 data lines in master bedroom and kitchen and RG-6 quad shield coaxial cable in all the bedrooms and family room or great room
- Electrical smoke detectors with battery back-up
- Carbon monoxide detector
- Finished two-car garage pre-wired for automatic door opener
- Exterior weather proof outlets (G.F.I.) in front and rear
- Decora switches and outlets throughout
- Minimum 200-amp electrical panel with circuit breakers
- Copper wiring in the interior of the home

MECHANICAL

- Carrier® minimum 14.5 SEER central A/C and heating system with programmable digital thermostat

ENERGY-SAVING FEATURES

- R-30 blown insulation above all air-conditioned living space
- R-11 BATT insulation between interior wall and garage wall
- R-4.1 insulated exterior masonry walls

INTERIOR FINISHES

- Knockdown textured finish on walls and ceilings (bathrooms excluded)
- 2-panel Cheyenne interior doors
- Colonial style baseboards throughout
- Satin nickel interior door levers throughout
- Satin nickel keyed entry handle set
- Vinyl-coated ventilated shelving in all closets
- 18" x 18" Ceramic tile flooring in all living areas and Laundry
- Luxurious wall-to-wall carpeting (installed over dense padding)

EXTERIOR FINISHES

- Two architecturally designed exterior elevations available with each floor plan
- Choice of exterior color schemes
- White aluminum framed windows
- Decorative exterior coach lights on garage
- Automatic irrigation system
- Fully sodded homesites with professionally designed landscaping
- Paver driveways, entry walkways, and patios
- Gutters in front area of driveway and entry walkway
- Baked in color through flat cement roof tiles

KITCHEN & BATH

- Frigidaire® Black Appliance Package:
Glass top range with self cleaning oven and microwave
25 cu ft. side by side refrigerator with ice maker
Five-cycle dishwasher
- Quality crafted custom designed flat paneled wood cabinets with 36" uppers and concealed hinges in the kitchen
- Double compartment stainless steel sink with Moen® single lever faucet
- Deluxe 1/3 hp in-sink garbage disposal
- Choice of 12" x 12" ceramic tile floors and bath shower walls
- All baths with adult height custom designed cabinets
- Cultured marble vanity counters
- Full vanity mirrors in all baths

QUALITY ASSURANCE

- Closing cost incentives (when using preferred lender for financing & DHI Title)*
- Personalized New Homeowner Orientation
- D.R. Horton 1-Year Warranty
- 10-Year RWC™ warranty to protect your investment
- 10-Year Carrier® limited warranty



*Not all buyers will qualify. Not redeemable for cash. All terms and conditions subject to credit approval, market changes and availability. Buyers are not required to finance through preferred lender as a condition of purchase or access to settlement services. Included features subject to change without prior notice or obligation. As a result, please consult with one of our sales representatives for the latest community information.

4 Bedrooms, 3 Baths, 2-Car Garage



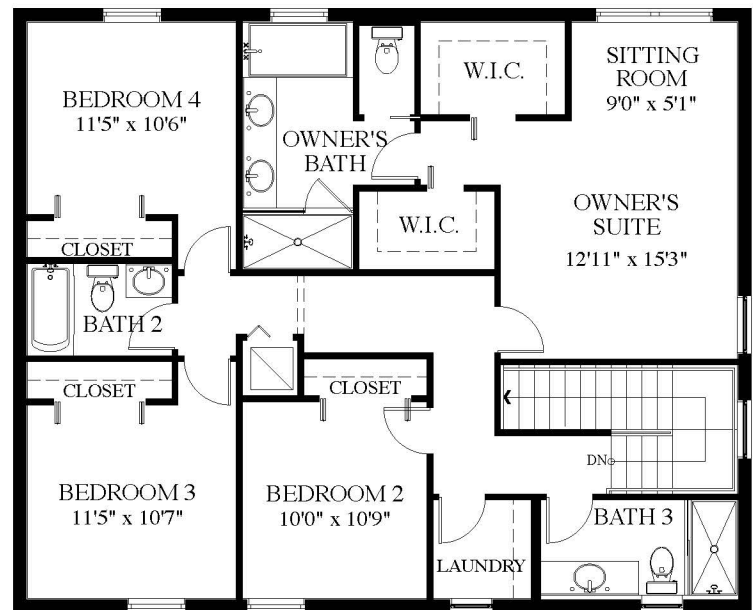
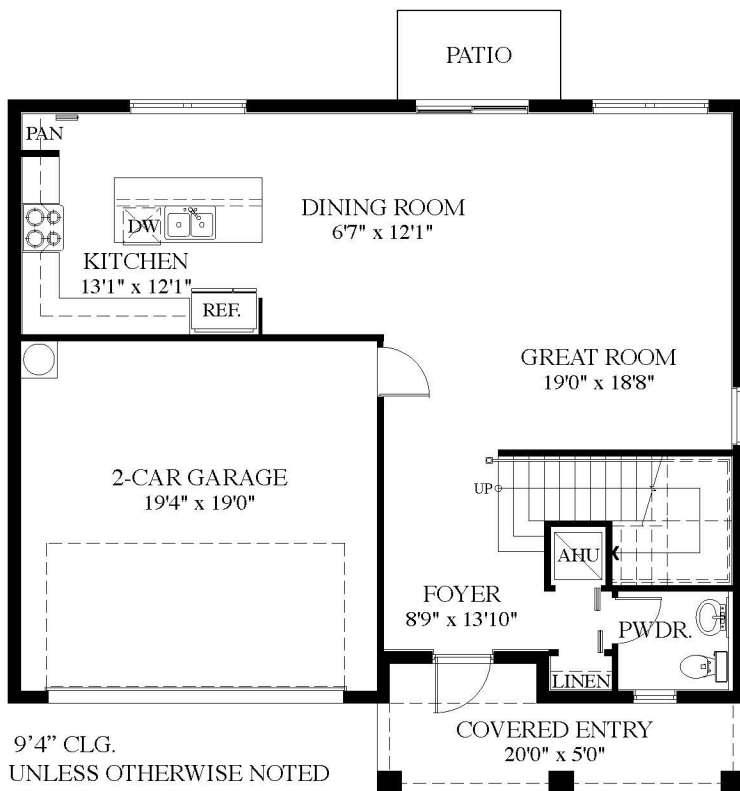
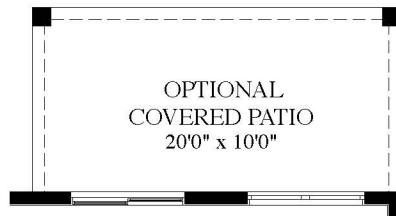
9'4" CLG. UNLESS OTHERWISE NOTED



Pictures, photographs, features, colors, drawings, floor plans, square footages and sizes are approximate for illustration purposes only and will vary from the homes as built. All drawings are the artist's concept.

Total A/C Sq. Ft. 1,841
Entry..... 20
2-Car Garage 392
Total Sq. Ft. 2,253

4 Bedrooms, 3½ Baths, 2-Car Garage

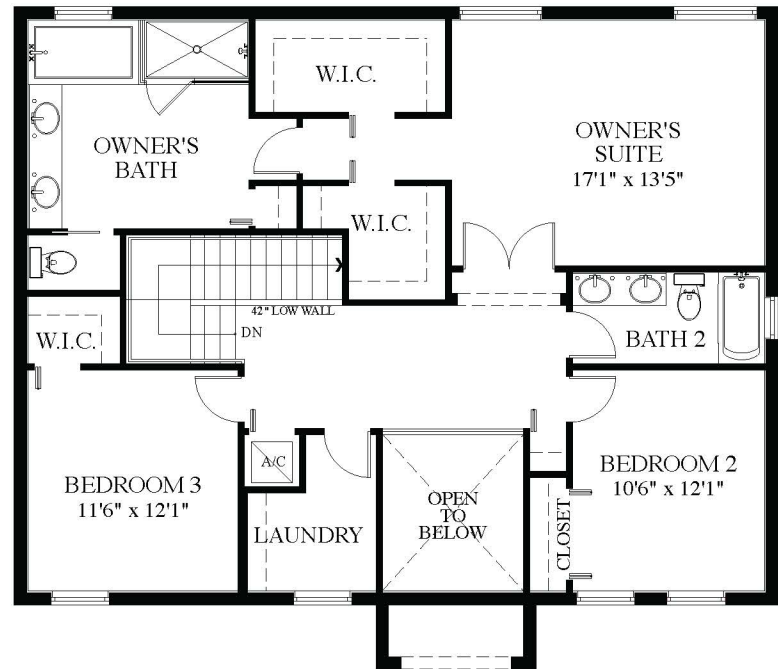
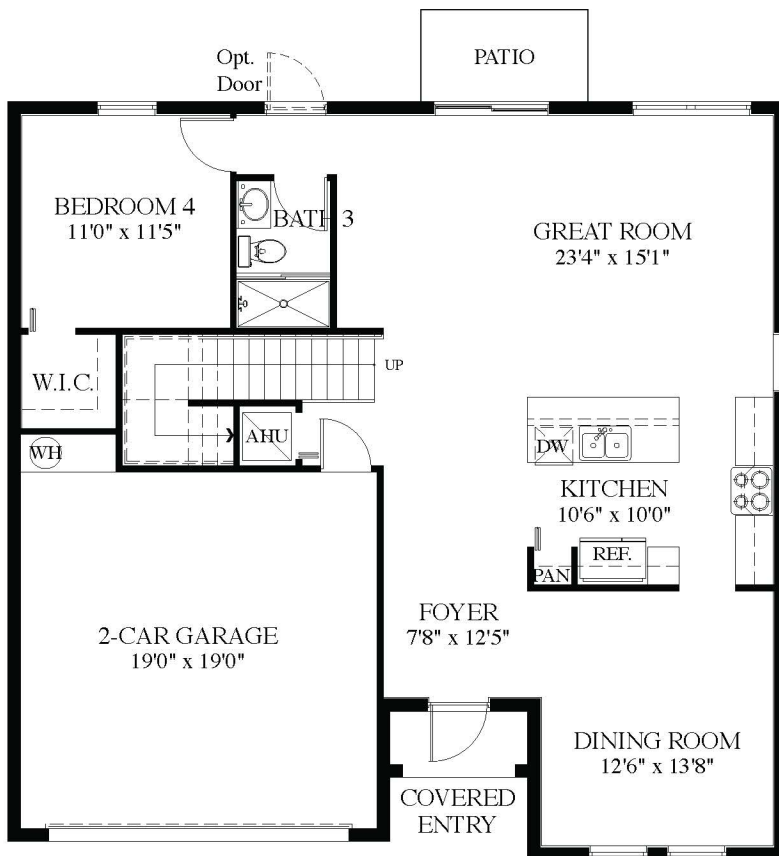
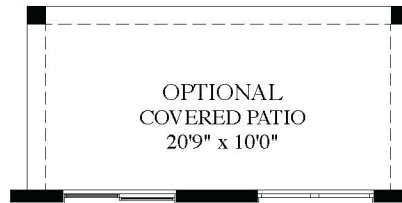


1st Floor A/C Sq. Ft.	904
2nd Floor A/C Sq. Ft.	1,241
Total A/C Sq. Ft.	2,145
Covered Entry	120
2-Car Garage	388
Total Sq. Ft.	2,653



Pictures, photographs, features, colors, drawings, floor plans, square footages and sizes are approximate for illustration purposes only and will vary from the homes as built. All drawings are the artist's concept.

4 Bedrooms, 3 Baths, 2-Car Garage



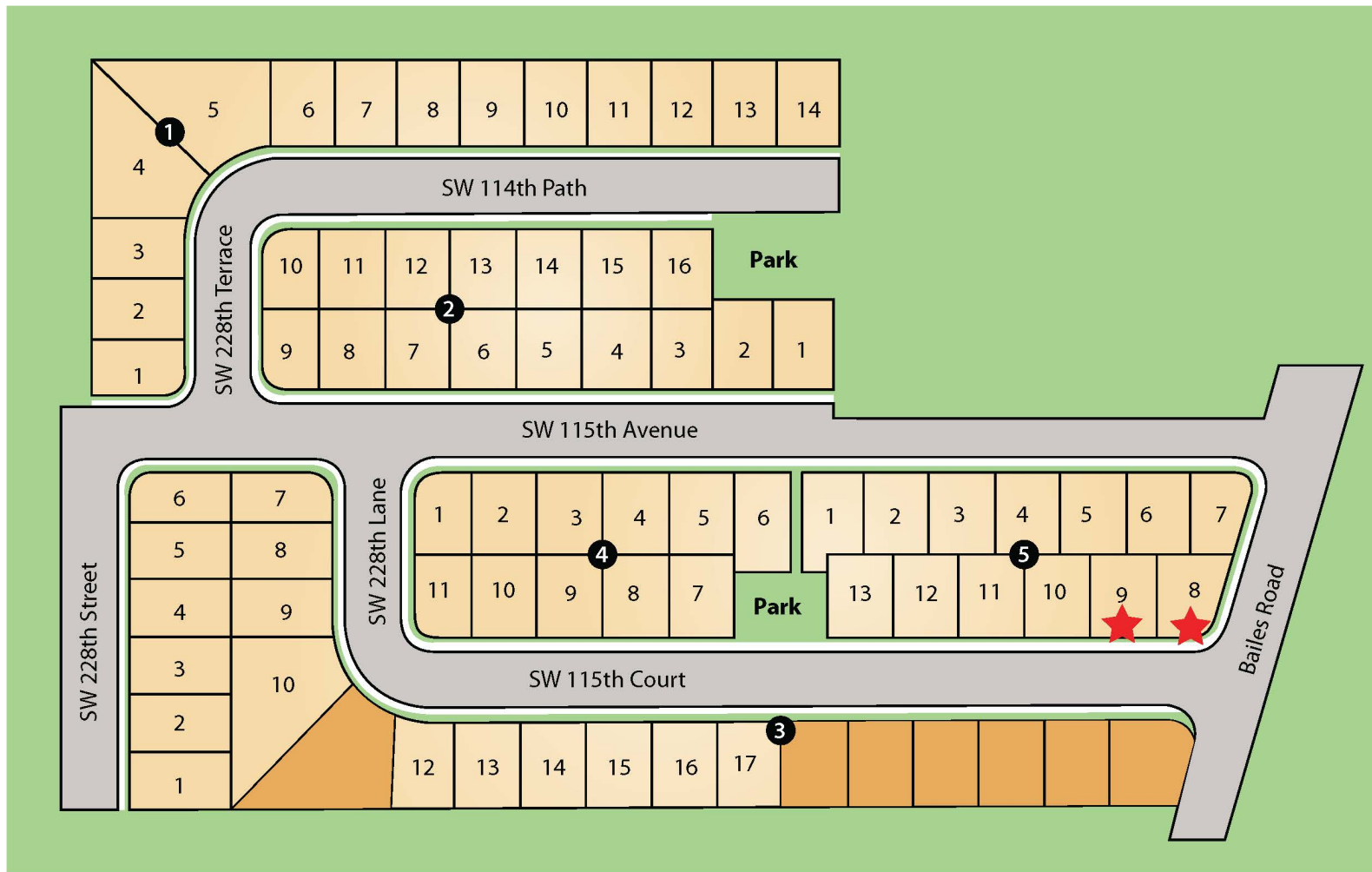
9'4" CLG. UNLESS OTHERWISE NOTED

1st Floor A/C Sq. Ft.	1,196
2nd Floor A/C Sq. Ft.	1,222
Total A/C Sq. Ft.	2,418
Entry	26
2-Car Garage	403
Total Sq. Ft.	2,849



Pictures, photographs, features, colors, drawings, floor plans, square footages and sizes are approximate for illustration purposes only and will vary from the homes as built. All drawings are the artist's concept.

Community SITEPLAN



★ Sales Model



Builder reserves the right to make reasonable modifications to the plans and specifications, including house orientation on lot and reversal. Drawing is artist's rendering and is approximate for illustration purposes only and is subject to change without notice or obligation. 3/16

