



Townhomes from the low \$200s\*  
Single-Family Homes from the high \$200s\*



\*Home and community information, including pricing, included features, terms, availability and amenities are subject to change or prior sale at any time without notice or obligation. Pictures, photographs, features, colors and sizes are approximate for illustration purposes only and will vary from the homes as built. NOV. 2014

# THE EXPRESS HOMES STORY

Express Homes is one of the nation's leading homebuilders for affordable homes. Take comfort in one of our newly constructed homes that has a reputation for quality and value. Whether you are a first-time homebuyer or looking for your next home, Express Homes is sure to have a home that suits your lifestyle and budget. Let us help you through the buying process and welcome you to your new home.



## POINTS OF INTEREST



1. ArtSouth
2. Biscayne National Park/Marina
3. Coral Castle
4. Everglades Alligator Farm
5. Everglades National Park
6. Fruit & Spice Park
7. Black Point Park
8. Homestead Library
9. Homestead Rodeo
10. Homestead-Miami Speedway
11. Homestead Sports Complex
12. Homestead Air Reserve Base
13. Miami-Dade Community College
14. Prime Outlets At Florida City
15. Nike Factory Store
16. Walmart
17. Southland Mall
18. Homestead Hospital
19. Homestead Pavilion
20. Park & Ride
21. Coconut Palm K-8 Academy
22. Redland Middle School
23. Homestead Senior High School



# INCLUDED FEATURES

## STRUCTURAL

- Reinforced 2500 psi concrete monolithic foundation slab
- Concrete block exterior walls on first and second floors
- Professionally engineered roof and floor trusses with hurricane clips and bracing
- Durable metal garage door
- Hurricane storm panels
- Embossed insulated 8' front door

## PLUMBING

- Elongated commodes throughout
- Pedestal sink in powder room
- Moen® bathroom faucets throughout
- CPVC plumbing water lines
- 50 gallon insulated water heater
- Interior washer/dryer hook-up
- Ice maker line with shut-off valve
- Exterior hose bib connections in front and rear for convenience

## ELECTRICAL

- Square D® surge protection on all major appliances
- Pre-wired for ceiling fans with switches in all bedrooms and family room
- High speed structured wiring for 4-line phone, video and computer  
Includes CAT-5 data lines in master bedroom and family room and RG-6 quad shield coaxial cable in all the bedrooms and family room or great room
- Electrical smoke detectors with battery back-up
- Carbon monoxide detector
- Pre-wired for garage door opener
- Exterior weather proof outlets (G.F.I.) in front and rear
- Decora® switches throughout
- Minimum 200-amp electrical panel with circuit breakers
- Copper wiring in the interior of the home

## MECHANICAL

- Carrier® 14.5 SEER central A/C and heating system with programmable digital thermostat

## ENERGY-SAVING FEATURES

- R-30 blown insulation above all air-conditioned living space
- R-11 BATT insulation between interior wall and garage wall
- R-4.1 insulated exterior masonry walls

## INTERIOR FINISHES

- 9' Ceiling on 1st floor & 9'4" ceiling in 2nd floor
- Knockdown textured finish on walls and ceilings (bathrooms excluded)
- Raised panel interior doors
- Colonial style baseboards throughout
- Satin nickel interior door knobs throughout
- Satin nickel keyed entry lockset & deadbolt
- Vinyl-coated ventilated shelving in all closets
- 18" x 18" Ceramic tile flooring in Foyer, Kitchen, and Laundry
- Luxurious wall-to-wall carpeting in a variety of designer colors (installed over dense padding)

## EXTERIOR FINISHES

- Two architecturally designed exterior elevations available with each floor plan
- Choice of designer exterior color schemes
- White aluminum framed windows
- Decorative exterior coach light on garage
- Fully sodded homesites with professionally designed landscaping
- Concrete driveways, entry walkways, and patios
- Baked in color through cement "S" type roof tiles
- Fenced in back yards

## KITCHEN & BATH

- Kitchen appliances:
  - Range oven with range hood
  - 18 cu. ft. refrigerator
  - Dishwasher
- Quality crafted custom designed flat paneled wood cabinets with 30" uppers and concealed hinges in the kitchen
- Double compartment undermount stainless steel kitchen sink with Moen® single lever faucet
- Deluxe 1/3 hp in-sink garbage disposal
- Choice of 12" x 12" ceramic tile floors with 6" x 6" tiles on master bath shower walls and bathtub walls in secondary baths
- All baths with adult height custom designed cabinets
- Full vanity mirrors in all baths

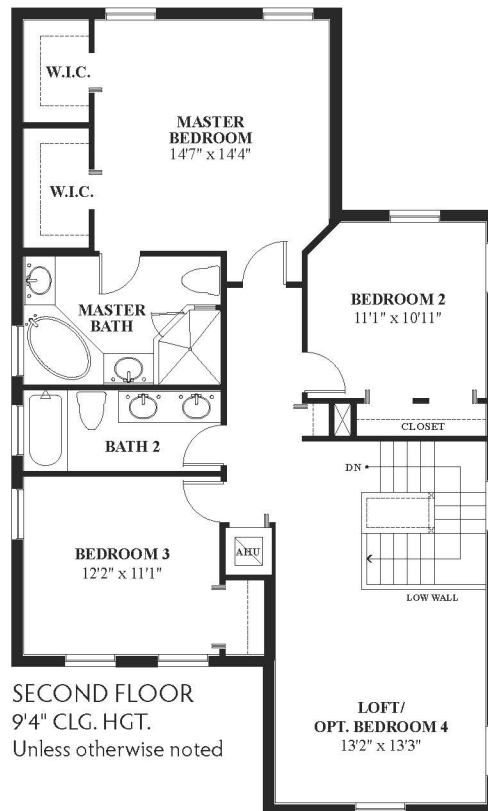
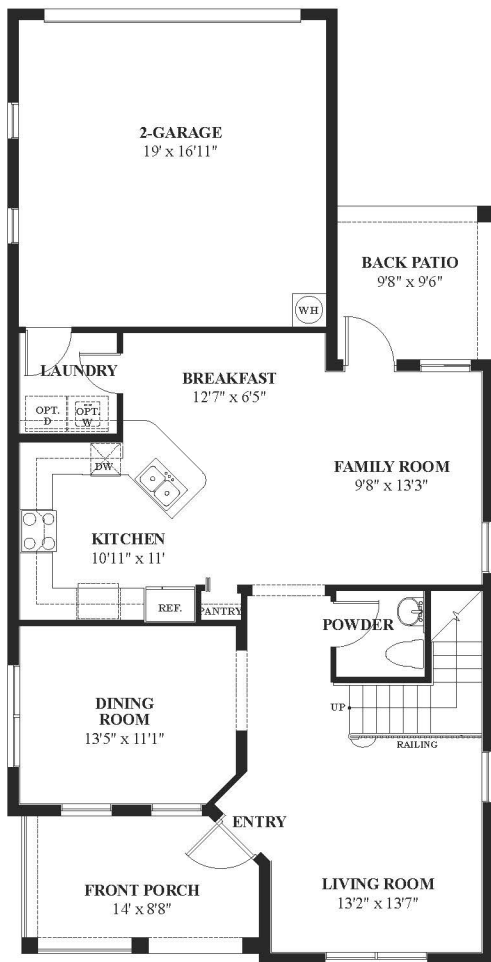
## QUALITY ASSURANCE

- Closing cost incentives (when using preferred lender for financing & DHI Title)\*
- Personalized New Homeowner Orientation
- D.R. Horton 1-Year Warranty
- 10-Year RWC™ warranty to protect your investment
- 10-Year Carrier® limited warranty



\*Not all buyers will qualify. Not redeemable for cash. All terms and conditions subject to credit approval, market changes and availability. Buyers are not required to finance through preferred lender as a condition of purchase or access to settlement services. Included features subject to change without prior notice or obligation, as a result, please consult with one of our sales representatives for the latest community information.

# 3 Bedrooms, 2½ Baths, Loft, 2-Car Garage

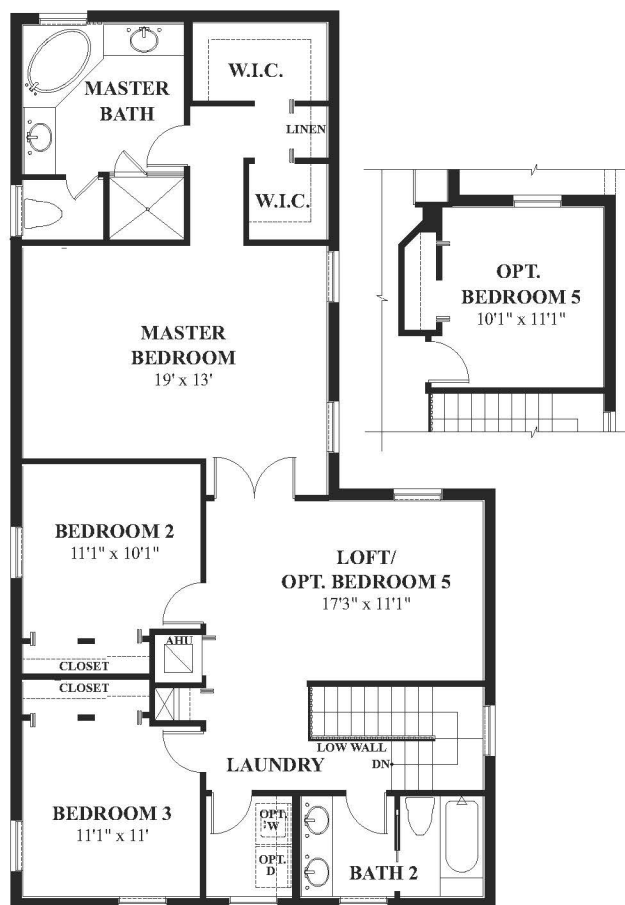


1st Floor A/C Sq. Ft.	1023
2nd Floor A/C Sq. Ft.	1177
Total A/C Sq. Ft.	2,200
Front Porch	120
Back Patio	92
2-Car Garage	400
Total Sq. Ft.	2,812



Pictures, photographs, features, colors, drawings, floor plans, square footages and sizes are approximate for illustration purposes only and will vary from the homes as built. All drawings are the artist's concept. 5/14

---



SECOND FLOOR  
9'4" CLG. HGT. Unless otherwise noted

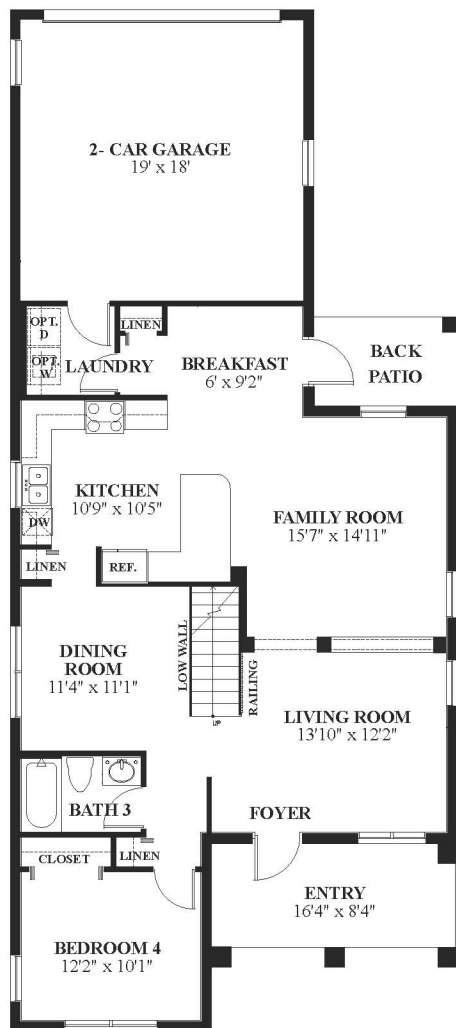
1st Floor A/C Sq. Ft.....	1181
2nd Floor A/C Sq. Ft. ....	1311
Total A/C Sq. Ft.....	2,492
Entry .....	58
Front Porch .....	132
2-Car Garage .....	420
Total Sq. Ft. ....	3,102



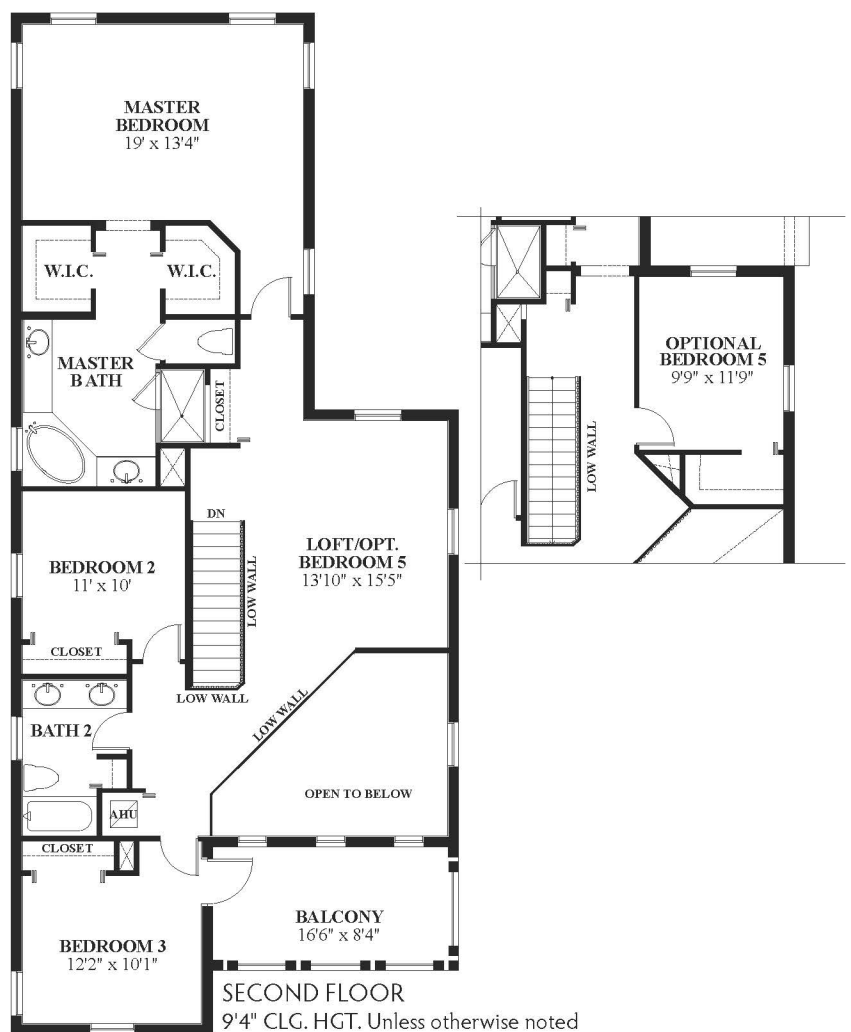
Pictures, photographs, features, colors, drawings, floor plans, square footages and sizes are approximate for illustration purposes only and will vary from the homes as built. All drawings are the artist's concept. 5/14



# 4 Bedrooms, 3 Baths, Loft, 2-Car Garage



FIRST FLOOR  
9' CLG. HGT. Unless otherwise noted



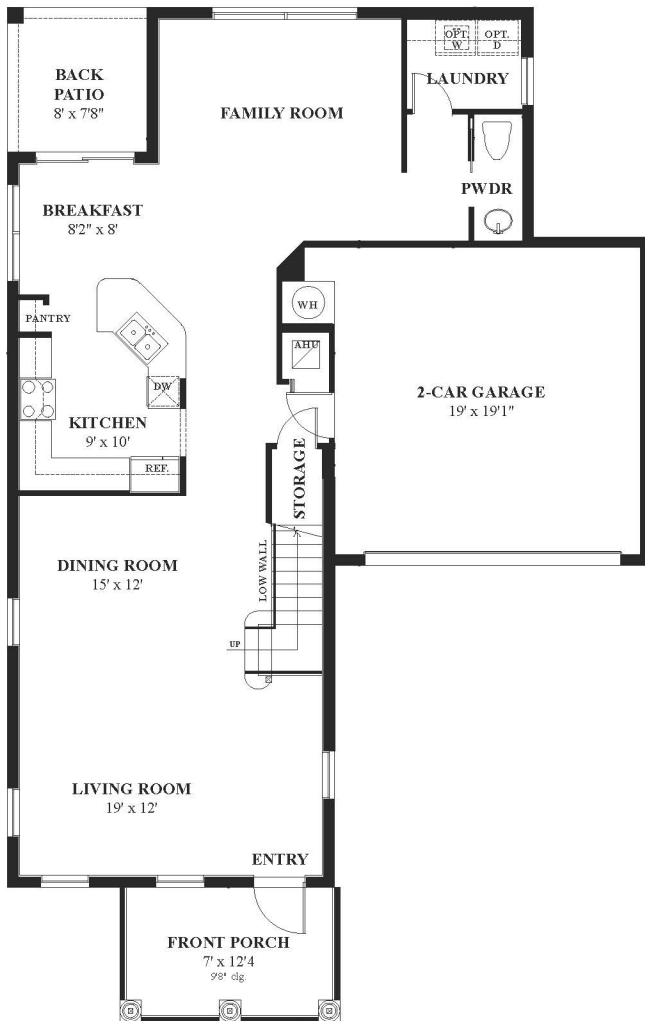
SECOND FLOOR  
9'4" CLG. HGT. Unless otherwise noted

1st Floor A/C Sq. Ft.....	1200
2nd Floor A/C Sq. Ft. ....	1410
Total A/C Sq. Ft.....	2,610
Entry .....	137
Back Patio .....	58
Balcony .....	137
2- Car Garage .....	400
Total Sq. Ft. ....	3,342



Pictures, photographs, features, colors, drawings, floor plans, square footages and sizes are approximate for illustration purposes only and will vary from the homes as built. All drawings are the artist's concept. 5/14

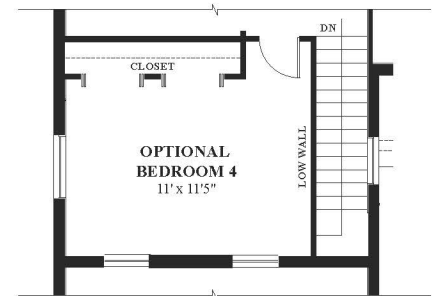
# 3 Bedrooms, 2½ Baths, Loft, 2-Car Garage



FIRST FLOOR  
9' CLG. HGT. Unless otherwise noted



SECOND FLOOR  
9'4" CLG. HGT. Unless otherwise noted

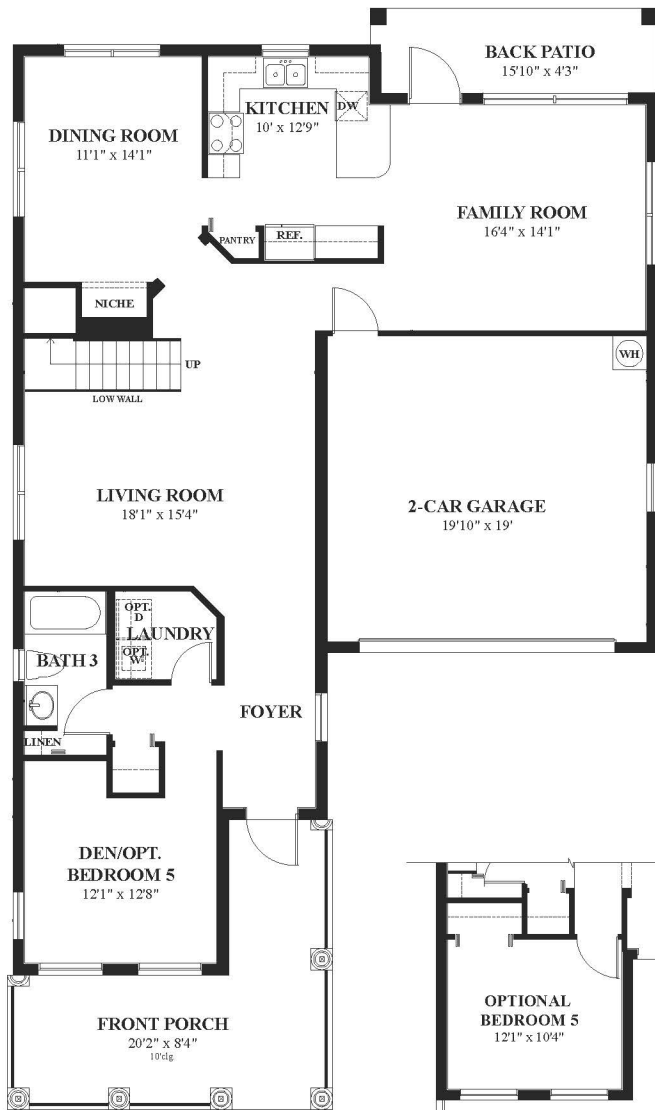


1st Floor A/C Sq. Ft.....	1205
2nd Floor A/C Sq. Ft. ....	1299
Total A/C Sq. Ft.....	2,504
Front Porch .....	108
Back Patio .....	78
2-Car Garage .....	406
Total Sq. Ft. ....	3,096



Pictures, photographs, features, colors, drawings, floor plans, square footages and sizes are approximate for illustration purposes only and will vary from the homes as built. All drawings are the artist's concept. 5/14

## 4 Bedrooms, 3 Baths, Den, 2-Car Garage



**FIRST FLOOR**  
9' CLG. HGT. Unless otherwise noted



**SECOND FLOOR**  
9'4" CLG. HGT. Unless otherwise noted

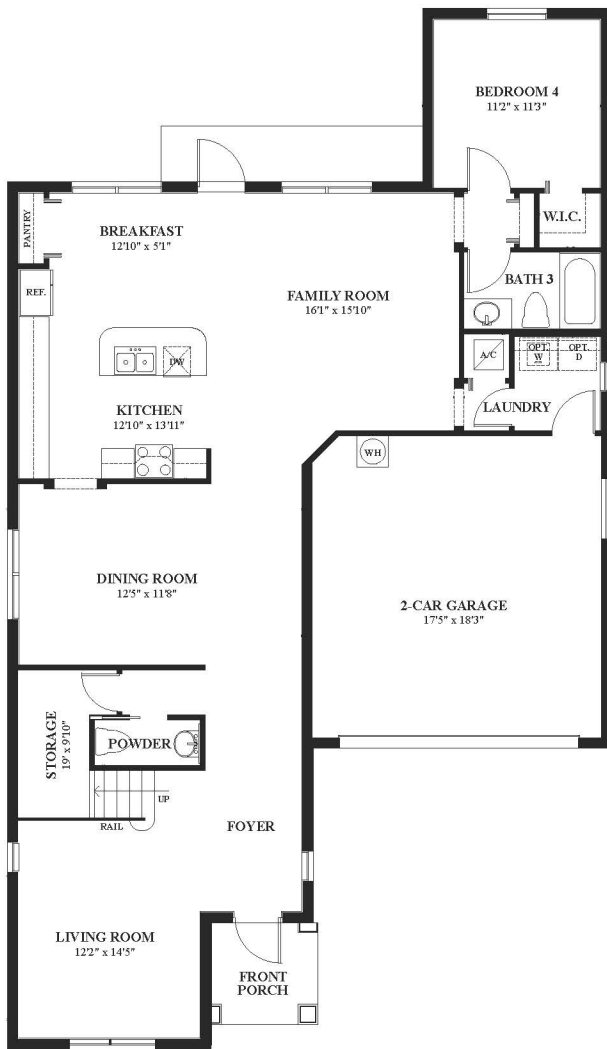
1st Floor A/C Sq. Ft.....	1387
2nd Floor A/C Sq. Ft. ....	1315
Total A/C Sq. Ft.....	2,702
Front Porch .....	221
Back Patio .....	92
2-Car Garage .....	403
Total Sq. Ft.....	3,418



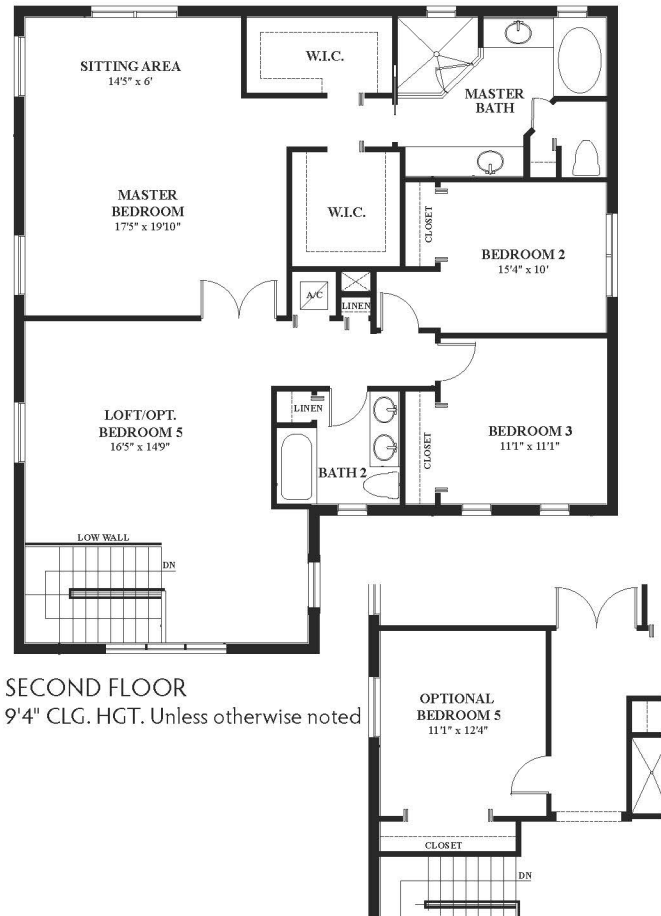
Pictures, photographs, features, colors, drawings, floor plans, square footages and sizes are approximate for illustration purposes only and will vary from the homes as built. All drawings are the artist's concept. 5/14



# 4 Bedrooms, 3½ Baths, Loft, 2-Car Garage



FIRST FLOOR  
9' CLG. HGT. Unless otherwise noted



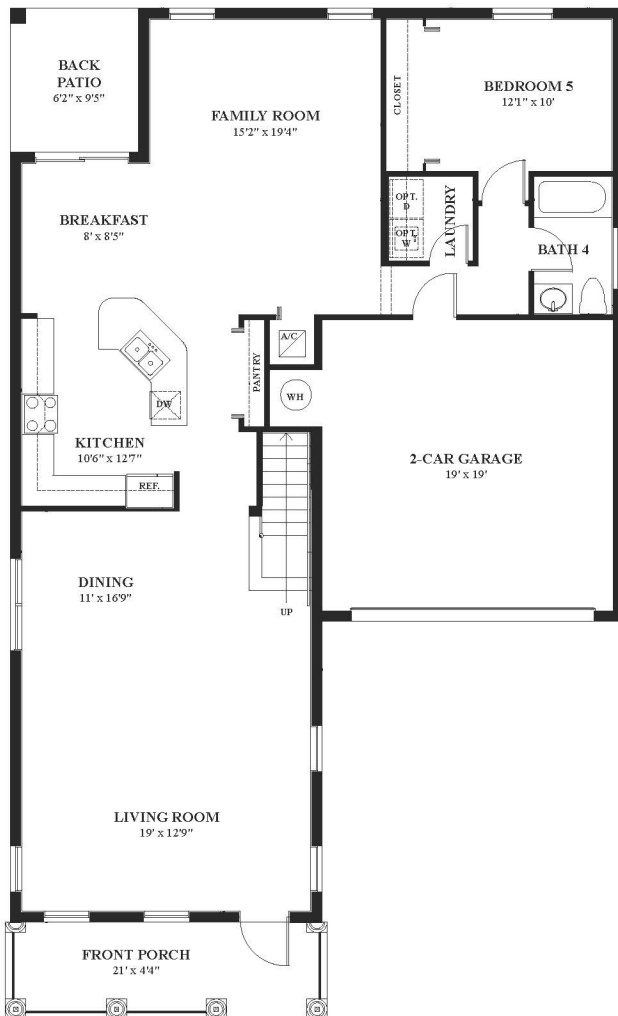
SECOND FLOOR  
9'4" CLG. HGT. Unless otherwise noted

1st Floor A/C Sq. Ft.	1584
2nd Floor A/C Sq. Ft.	1478
Total A/C Sq. Ft.	3,062
Front Porch	44
2-Car Garage	408
Total Sq. Ft.	3,514



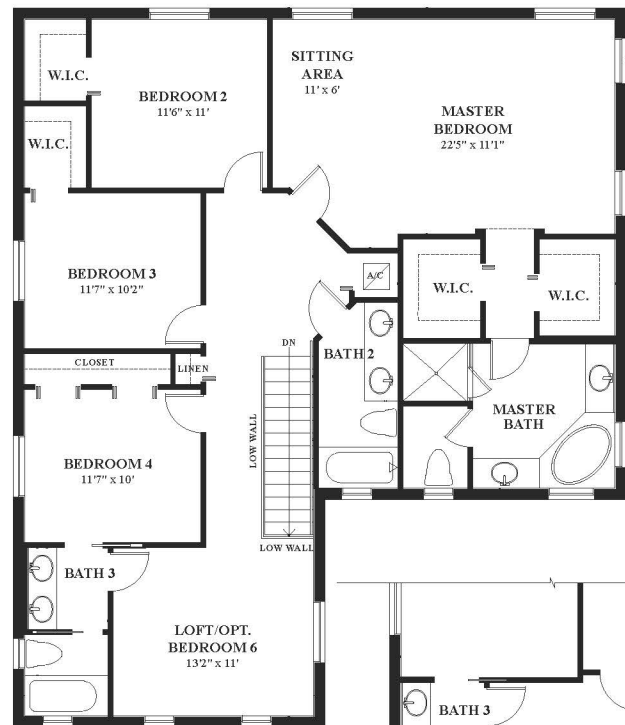
Pictures, photographs, features, colors, drawings, floor plans, square footages and sizes are approximate for illustration purposes only and will vary from the homes as built. All drawings are the artist's concept. 5/14

# 5 Bedrooms, 4 Baths, Loft, 2-Car Garage



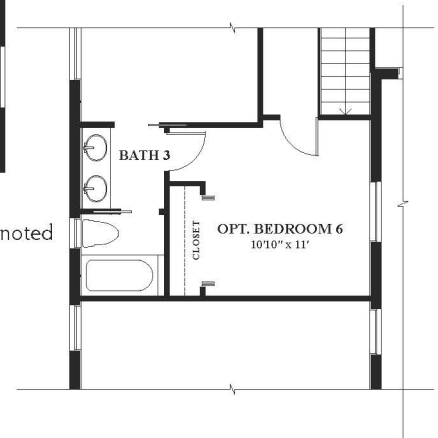
FIRST FLOOR

9' CLG. HGT. Unless otherwise noted



SECOND FLOOR

9'4" CLG. HGT. Unless otherwise noted

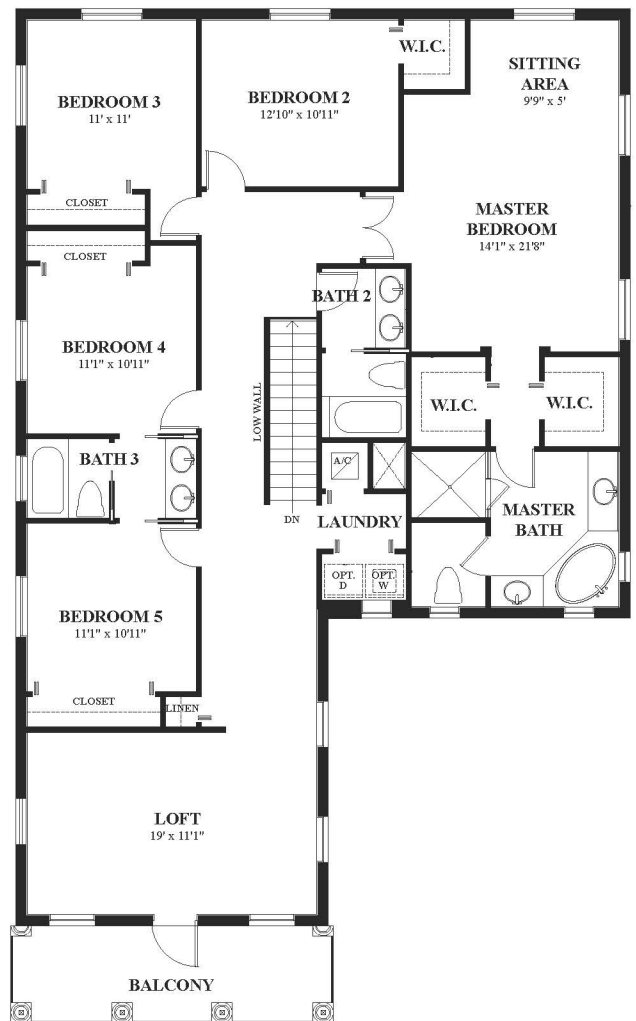


1st Floor A/C Sq. Ft.....	1522
2nd Floor A/C Sq. Ft. ....	1550
Total A/C Sq. Ft.....	3,072
Front Porch .....	129
Back Patio .....	78
2-Car Garage .....	400
Total Sq. Ft. ....	3,679



Pictures, photographs, features, colors, drawings, floor plans, square footages and sizes are approximate for illustration purposes only and will vary from the homes as built. All drawings are the artist's concept. 5/14

# 6 Bedrooms, 4½ Baths, Loft, 2-Car Garage



Pictures, photographs, features, colors, drawings, floor plans, square footages and sizes are approximate for illustration purposes only and will vary from the homes as built. All drawings are the artist's concept. 5/14

1st Floor A/C Sq. Ft.....	1599
2nd Floor A/C Sq. Ft. ....	1956
Total A/C Sq. Ft.....	3,555
Front Porch .....	127
Balcony .....	127
2-Car Garage .....	394
Total Sq. Ft.....	4,203



# COMMUNITY SITEPLAN



Builder reserves the right to make reasonable modifications to the plans and specifications, including house orientation on lot and reversal. Drawing is artist's rendering and is approximate for illustration purposes only and is subject to change without notice or obligation